

discover what's possible

# DOLCE BAD NAUHEIM

Located just outside Frankfurt, Germany, Dolce Bad Nauheim combines Art-Nouveau-Architecture with modern facilities. It is situated only 35 km from Frankfurt International Airport and the fair grounds.

## GUEST ROOMS AND SUITES

Our 159 guest rooms include standard, comfort and superior categories as well as 13 suites and 6 wheelchair accessible rooms featuring views of the lush park or into the greens of the front part. They offer a perfect balance of comfort and convenience.

## ROOM FACILITIES

- Connecting rooms for families
- All rooms are non-smoking
- Flat screen television
- Work desk
- Free wireless internet
- Mini-bar
- Safe
- Coffee & tea making facilities
- View into greens

## RESTAURANTS AND BARS

Dine in our main Restaurant or chose a separate room for private Dining.

- Restaurant Platanenhof (buffet and à-la-carte)
- Restaurante Parkside (mainly for breakfast)
- EMOTIONS Bar & Lounge in the Lobby (drinks and snacks)

## MEETINGS AND EVENTS

The equipment meets today's requirements: daylight in all conference rooms, climate control, ergonomic chairs. There is also an experienced planning and technical team in-house, which stands for a smooth and successful process — no matter whether video conference or product presentation. The large outdoor area with the Platanenhof and the spacious terraces also offers numerous possibilities for events and presentations.

## ON-SITE AND LOCAL ACTIVITIES

Whether you want to relax or stay active, there's always plenty to do at Dolce Bad Nauheim and nearby:

- Finnish Sauna & Softsauna
- Steam Bath
- Large indoor Pool
- Fitnessroom
- Theater Events
- Art-Nouveau tours
- Jogging trails in the Park
- Fencing & Arching
- City Center (500 m)
- 9-hole Golf (500 m)
- High Ropes Garden (10 km)
- Hessenpark (25 km)
- Saalburg (30 km)
- Frankfurt Shopping (35 km)



## CAPACITY CHART

- 2750 m<sup>2</sup> (29.600 sqft) of indoor meeting and banqueting area
- 27 flexible meeting rooms, largest 528 m<sup>2</sup> (5.698 sqft), Theater: 730 seats with foldaway tables

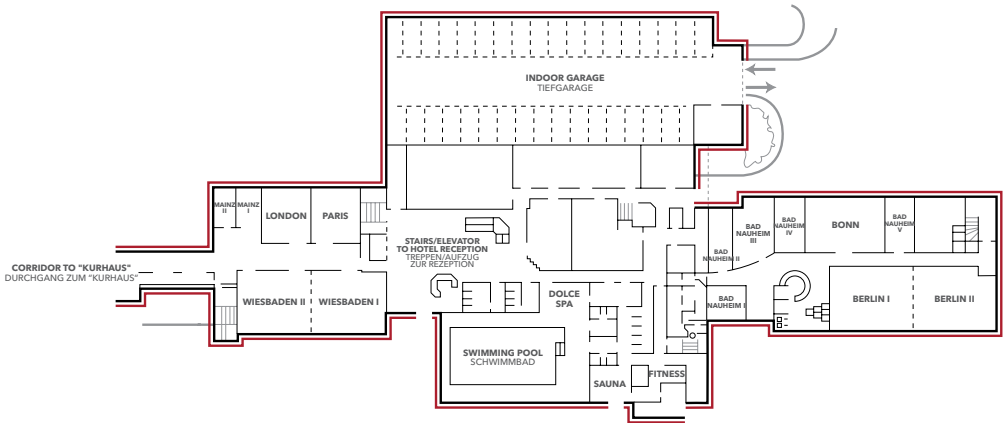
Meeting Rooms	Measurements mts				Measurements ft				Theatre	Classroom	U-shape	Boardroom	Cabaret	Reception	Dining
	m <sup>2</sup>	L	B	H	sq ft	W	B	H							
<b>Main Building</b>															
Wiesbaden I	102	10,5	9,7	3	1098	34	32	10	60	32	26	24	32	-	-
Wiesbaden II	102	10,5	9,7	3	1098	34	32	10	60	32	26	24	32	-	-
London	53	7,3	7,3	3	571	24	24	10	30	20	16	14	18	-	-
Paris	53	7,3	7,3	3	571	24	24	10	30	20	16	14	18	-	-
Mainz I	26	7,3	3,5	3	280	24	11	10	10	-	-	8	-	-	-
Mainz II	26	7,3	3,5	3	280	24	11	10	10	-	-	8	-	-	-
Berlin I	89	10,3	8,6	3,2	958	34	28	10	60	40	26	30	32	-	-
Berlin II	89	10,3	8,6	3,2	958	34	28	10	60	40	26	30	32	-	-
Bonn	81	11,2	7,2	3,3	872	37	24	11	40	30	24	24	24	-	-
Bad Nauheim I	42	4,4	9,6	3,3	452	14	31	11	20	18	-	14	-	-	-
Bad Nauheim II	30	3,8	7,8	3,3	323	12	26	11	12	8	-	10	-	-	-
Bad Nauheim III	27	3,8	7,2	3,3	291	12	24	11	10	8	-	10	-	-	-
Bad Nauheim IV	27	3,8	7,2	3,3	291	12	24	11	10	8	-	10	-	-	-
Bad Nauheim V	23	3,2	7,2	3,3	248	10	24	11	-	6	-	10	-	-	-
Parkside restaurant	209	32,7	6,4	2,7	2250	141	21	9	-	-	-	-	-	-	124/200
<b>Kurhaus Groundfloor</b>															
Kursaal	528	23,5	22,5	5,2	5683	77	74	17	450	220	86	76	120	350	250
Spiegelsaal	215	21,5	10	4,4	2314	71	33	14	160	112	50	40	72	140	120
Bad Homburg	123	14,6	8,4	3,8	1324	48	28	12	80	60	30	24	32	60	80
Salon	41	6,1	6,7	5,3	441	20	22	17	30	12	12	10	16	20	24
Sprudelhof	100	11,3	8,9	5,3	1076	37	29	17	60	40	28	22	36	60	60
Emporensaal/bottom	135	10,8	12,5	8,4	1453	35	41	27	70	-	-	-	-	140	60
Emporensaal/top	148	18,5	8	3,2	1593	61	26	10	-	-	-	-	-	140	140
Theater/Stage	154	14	11	12	1657	46	36	39	-	-	-	-	-	-	120
Theater/Auditorium	508	20,5	24,8	12	5468	67	81	39	580	-	-	-	-	-	-
Theater/Loge	242	-	-	-	2604	-	-	-	132	-	-	-	-	-	-
Th-Foyer large	153	17	9	3,5	1647	56	30	11	-	-	-	-	-	200	200
Th-Foyers left&right	135	14,9	9,1	3,5	1453	49	30	11	-	-	-	-	-	-	50/50
Foyer Pub	85	9,4	9	3,5	915	31	30	11	-	-	-	-	-	45	38
Foyer Kurhaus	180	19,1	9,4	3,5	1938	63	31	11	-	-	-	-	-	150	-
Arcades small	88	13,5	6,5	5,5	947	44	21	18	-	-	-	-	-	60	40
Arcades large	440	55,5	7,2	5,5	4736	182	24	18	-	-	-	-	-	380	220
Rest. Platanenhof	307	24,2	12,7	-	3305	79	42	-	-	-	-	-	-	-	178
Mahony's	174	9	19,35	2,8	1873	30	63	9	-	-	-	-	-	-	-
Wintergarten	48	6,9	6,9	3,8	517	22	22	12	30	18	12	12	24	50	40
<b>Upperfloor</b>															
Parksaal	135	18	7,5	6,3	1453	59	25	21	80	60	40	32	36	100	60
Kassel	50	8,6	5,8	3,9	538	28	19	13	20	16	14	16	-	-	-
Frankfurt	68	9,1	7,5	3,7	732	30	25	12	50	30	20	18	18	-	-
Gießen	52	8,7	6	3,9	560	29	20	13	30	20	16	18	-	-	-
<b>Combinable</b>															
Wiesbaden I+II	204	21	9,7	3	2196	69	32	10	120	80	50	50	64	120	-
Berlin I+II	178	20,6	8,6	3,2	1916	68	28	10	120	80	50	50	64	100	-

Contact us for more details about new interactive event formats: Fishbowl, World Café, Campfire, Open Space and Pecha Kucha.



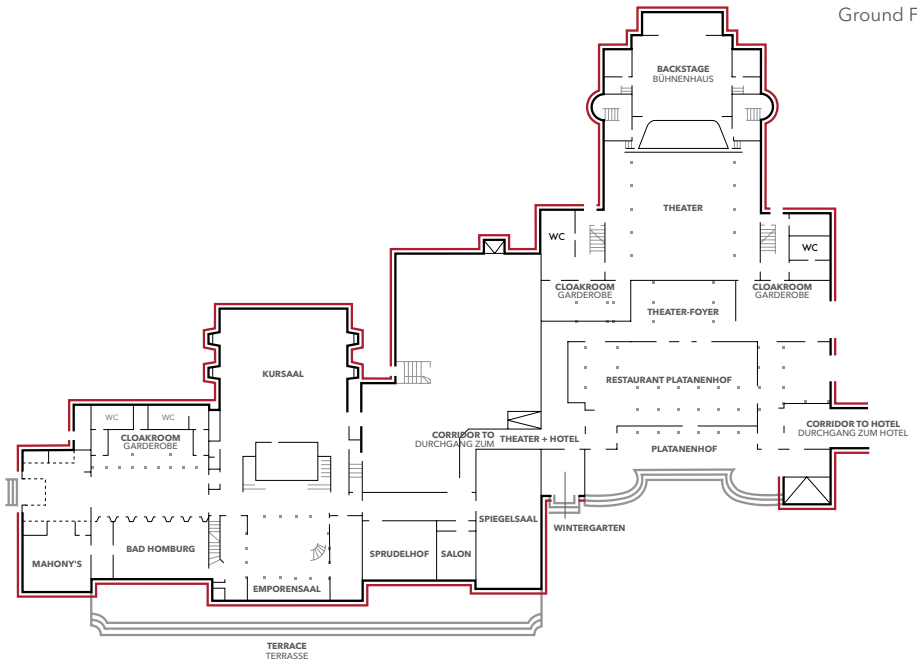
## FLOOR PLANS

Main Building



# FLOOR PLANS

Ground Floor



1st Floor

